



Ventura County Handweavers & Spinners Guild

Exhibition Catalog

**Beatrice Wood Center for the Arts / Ojai, CA
Logan Gallery**

November 12, 2022 – January 1, 2023

1

PAT SULLIVAN

DARK TO LIGHT AND BACK AGAIN



ORANGE WOOL SCARF

HANDWOVEN - 9" X 50"

\$80

2

**CAROL JORDAN
MUTED STRIPE SHAWL**



**HANDWOVEN SHAWL IN PINK TURQUOISE & CREAM
MIXED FIBERS OF VARIEGATED YARNS, PINK RIBBON & BLUE FINE
YARNS -LOVELY DRAPE & HAND**

22" X 52" 7" FRINGE

\$80

3

CINDY HAHN

COLOR TRANSITION



HANDWOVEN WOOL TABLE MAT

WEFT FACED WEAVE 100% WOOL WEFT & LINEN WARP

19.5" X 25" with FRINGE Warp sett 6 epi

\$110

4

SALLY CUDWORTH PAINTED DESERT



HANDWOVEN TENCEL SCARF
8/2 TENCEL WARP & WEFT
WASH BY HAND COOL-WARM
58" LENGTH

5

**ALLYSON SWANEY
BLUE HUCK**



SIX PLACEMATS & RUNNER SET

HANDWOVEN in HUCK THREADING & THREADLING

RUNNER 12.5" X 38" PLACEMATS (six) 12.5" X 20.5"

Machine Wash with cool Water Dry Flat

Use cool iron if needed

\$100

6 MARYANN ECKHOUT HOLIDAY TABLE RUNNER



HANDWOVEN COTTON/RAYON & TENCEL FINE YARNS

12" X 36"

\$40

7 NANCY WAGENBACH STORMY SEAS



HANDSPUN & HANDKNIT SCARF 11" X 57"

WOOL and TENCEL SPORTWEIGHT HANDSPUN YARN

HANDWASH GENTLY COOL WATER, ROLL IN TOWEL, LAY FLAT TO AIR DRY
\$300

8

**DEBORAH SCHOENBERGER
FRENCH CURVES**



HANDWOVEN TAPESTRY

Design of REPETITION OF SHAPE and SHADING

8" X 8" WOOL WEFT YARNS

\$500

9

ALLYSON SWANEY

SHADOW WEAVE IN RED & WHITE



HANDWOVEN SHAWL IN SHADOW WEAVE

EPI of 30 (ends per inch) FABRIC DRAPES BEAUTIFULLY

WOVEN STRUCTURE REFLECTS LIGHT

BAMBU (Bamboo) Yarn

18" X 82" Including 6" Fringe

Handwash with cool Water Dry on Medium heat

\$120

10 ALLYSON SWANEY VARIATIONS ON TWILL



HANDWOVEN KITCHEN TOWELS
multi-TWILL PATTERNED & MULTI-COLORED
28" x 18" COTTON
Machine Wash & Dry
\$45 Each OR \$ 120/set

11

CAROL JORDAN

TOWELS, TOWELS & TOWELS



HANDWOVEN TOWELS-in BLUE, PINKS, CREAM
Striped & VARIEGATED IN PLAIN weave & TWILL
COTTON

APPROX 15.5" X 24" stitched ends with 1" Fringe
\$40 EACH

12

**YANNETTE TRAVER
BRONZE ZINNIA**



**HANDWOVEN FREEFORM WALL SCUPTURE
CERAMIC FRAME**

**MISC HANDSPUN ART YARNS- Wool, Silk, Angora, Beads
\$240**

13

**YANNETTE TRAYER
FOR PAT**



**HANDWOVEN SHAWL WOVEN ON TRIANGLE LOOM
MISCELLANEOUS HANDSPUN ART YARNS- Handwash cold
52" across top of Triangle
\$250**

14

WHATEVER IS OLD IS NEW AGAIN



14

YANNETTE and JOHN TRAVER



**FAUX BOIS VINTAGE CHAIR-HANDWOVEN front in KROKBRAGD weaving
BACK FREEFORM RECYCLED WOOL YARNS 19"x 14" x2"
Schumacher "Citrus Garden" FABRIC SEAT
Wool, Silk, Beads, vintage Chair Frame
\$850**

15

**JOAN M. KARP
SPRING HILLSIDE**



HANDWOVEN TAPESTRY

Inspired by Springtime Walks along the Camarillo Hills

MISCELLANEOUS YARNS & FIBERS including TEA BAG dyed

16" X 20" metal & velcro hanger

\$225

16

ANDI BAEHNE-MEYER

HEKATE: BIRTH



HEKATE IS THE GODDESS OF TRANSITION & CROSSROADS

Naturally shed DEER ANTLER FRAME- COTTON WARP

WEFT: HANDSPUN SILK & WOOL YARNS

\$369

17

ANDI BAEHNE-MEYER

HEKATE: LIMINAL



HEKATE IS THE GODDESS OF TRANSITION & CROSSROADS

Naturally shed DEER ANTLER FRAME- COTTON WARP

WEFT: HANDSPUN ANGORA, SILK & WOOL YARNS PEACOCK FEATHERS

\$375

18

ANDI BAEHNE-MEYER

HECATE: REBIRTH



HEKATE IS THE GODD S OF TRANSITION & CROSSROADS

Naturally shed DEER ANTLER FRAME- COTTON Warp

WEFT: HANDSPUN SILK & WOOL YARN LAVENDER SPRIGS

\$357

19

**SALLY CUDWORTH
LENO SCARF**



HANDWOVEN of PLAIN WEAVE & LENO LACE WEAVE

5/2 BAMBOO WARP & LINEN WEFT

58" LENGTH

WASH BY HAND COOL-WARM

\$65

20

**DEBORAH SHOENBERGER
RIPPLES & REFLECTIONS**



**REFLECTIONS IN WATER
HANDWOVEN TAPESTRY 16" X 10" WOOL
FRAMED
\$1000**

21
DEBORAH SHOENBERGER
MOUNTAIN WING



AIRPLANE WING and MOUNT RAINIER
HANDWOVEN TAP TRY 10" X 15" FRAMED
WOOL WEFT
\$1000

22

DEBORAH SHOENBERGER
LINES AT PLAY



HANDWOVEN TAPESTRY
DESIGN STUDY OF LINES
WOOL 15" X 10" FRAMED
\$750

23

JOAN M. KARP

IN MEMORY OF BREONNA TAYLOR



HANDWOVEN WALL HANGING Inspired by Artist's Handwoven
Honorarium of George Floyd in 2020 show
Miscellaneous YARNS & RIBBONS, DOWEL
19" X 72"
\$325

24

JOAN M. KARP

WHOSE CHOICE: A WOMAN'S OR A LEGISLATOR'S



HANDWOVEN TAPESTRY Inspired By SUPREME COURT 'S DOBBS DECISION
Green Background modeled upon Texas legislature's seating pattern.
Multicolored yarns represent WOMEN in all their Complexity.

COTTON & RIBBON YARNS 18" x 20.75" x 3"

\$425

25

KAREN WASHBURN

“I WANT TO BE DIFFERENT”



HANDWOVEN & HANDBEADED NECKLACE

COTTON WARP 12 EPI

FRAMED

\$100

26

KAREN WASHBURN

“WIRE ME UP”



HANDWOVEN with REPLACEMENT OF NATURAL FIBERS WITH
ELECTRONIC WIRE was an INTERESTING CHALLENGE

COTTON WARP, ELECTRONIC WIRE, LED LIGHTS

8" X 8" FRAMED EPI

\$75

27

**GLENDA CLIFT
STUDY IN OPPOSITES**



HANDWOVEN REP WEAVE Sett at 60 epi
Not only RED/GREEN are OPPOSITES; PATTERN is FLIPPED
both HORIZONTALLY and VERTICALLY as are PIECES
KUMIHIMO SURROUND is Handbraided FRAMED
10/2 COTTON, MOP COTTON WEFT 14.5" X 11.5"
\$160

28

BETTY VILLAFANA

WOVEN IN COLOR - PINK SCARF



100% COTTON: WARP - Peruvian Organic Cotton

WEFT - Luna Grossa Roma Ribbon Yarn from Italy

Handwoven Length: 80"

\$60

29

DEBBIE THOMPSON

GUITAR STRAPS-THE COLOR OF MUSIC



INKLE WOVEN ADJUSTABLE GUITAR STRAP

COTTON

ADD A POP OF COLOR TO ACCOMPANY YOUR BEAUTIFUL MUSIC

\$80 Each

30

**DEBBIE THOMPSON
FASHIONABLE PHOTOGRAPHER**



**ADD SOME PIZZAZZ TO YOUR CAMERA!
ADJUSTABLE CAMERA STRAP
COTTON
\$50 EACH**

31

KAREN WASHBURN

“AND IT HAS POCKETS !”



**HANDWOVEN, HANDMADE PURSE with 5 Separate POCKETS
COTTON WARP, RAYON LADDER YARN WEFT, COTTON FABRIC**

12 epi 5" x 6" DO NOT WASH

\$125

32

**CAROL JORDAN
STRIPED PURSE**



HANDWOVEN PURSE IN BURGUNDY, BLUE & WHITE

MIXED FIBERS 2 POCKETS

FABRIC LINED SNAP CLOSURE KNIT CORD

8.75" X 8.5 "

\$50

33

**CAROL JORDAN
PLAID SCARF**



**HANDWOVEN SCARF IN PINK GRAY LAVENDER & CREAM
MIXED FIBERS with BEADS
8.5" X 63" 7" FRINGE
\$50**

34

JUDY HERSH

PLAID ALPACA SCARF



HANDWOVEN SCARF- ALPACA YARNS NATURAL COLORS

LOCALLY RAISED NEW HOPE ALPACAS 7.5 EPI

TWO COLOR PLAIN WEAVE on RIGID HEDDLE LOOM

\$250

35
JOAN M. KARP
COOL FAWN



HANDWOVEN SAORI INSPIRED WALL HANGING in BEIGE & WHITE
COTTON, MOHAIR, RIBBON, DOWEL
12" X 40"
\$190

36

MELISSA HANSEN
CACTUS THOUGHT



HANDWOVEN TAPESTRY

CHURRO WOOL YARN from TEEC NOS POS TRADING POST, NAVAJO NATION

27" X 35" 6 EPI

\$500

37

JOAN M. KARP

AUSPICIOUS SPACES



HANDWOVEN SAORI INSPIRED WALL HANGING

LENO TECHNIQUE with SPACED WARPS

30" X 33" SILK, COTTON, LAVENDER, DRIFTWOOD

\$210

38

GLENDAL CLIFT

Untitled -ORIGINAL DESIGN BY WEAVER



HANDWOVEN WALL HANGING-16 shaft network draft

10/2 COTTON 24 epi 24" x 18"

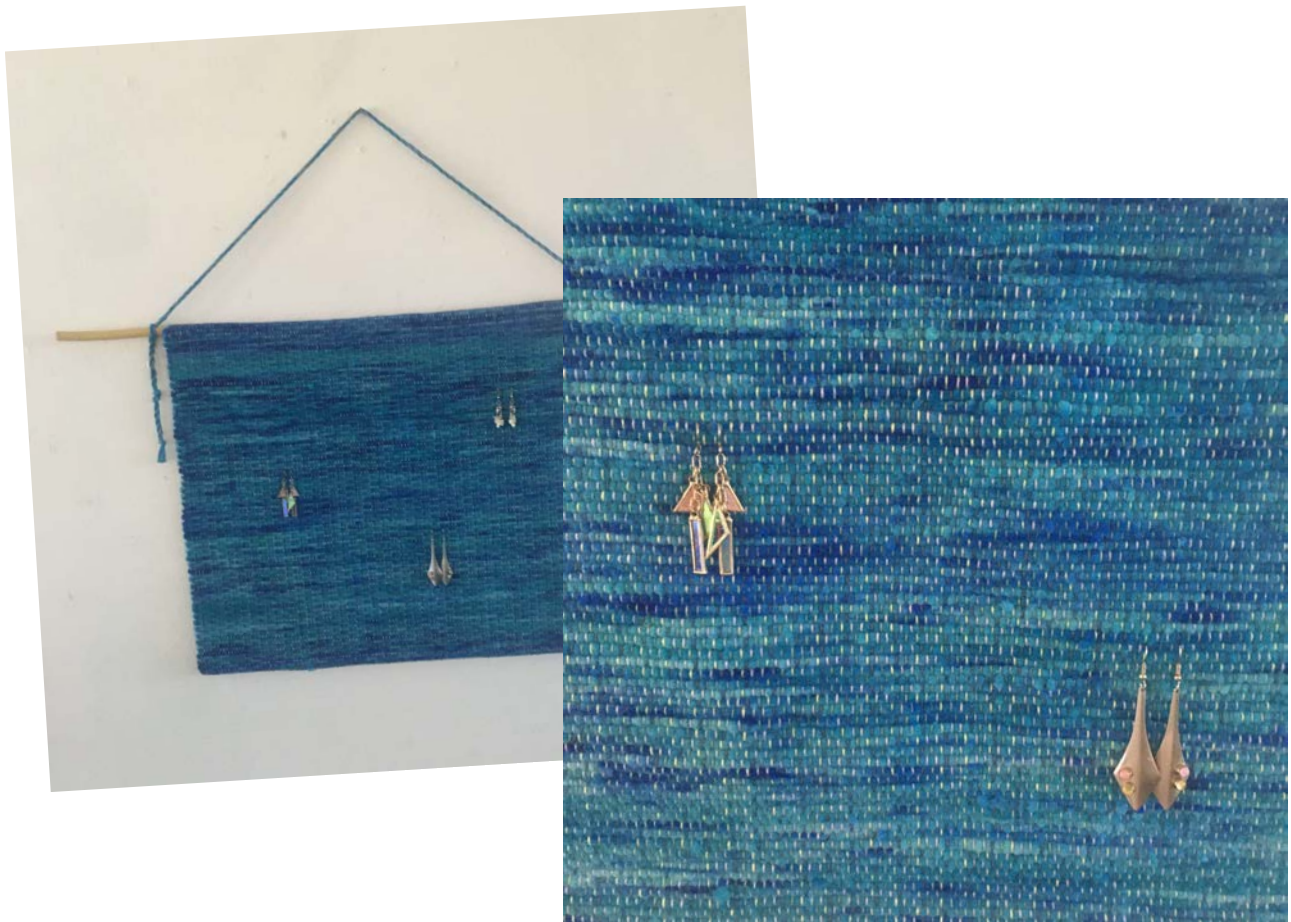
HANGER IS hand braided, Kumihimo braid

Hand wash and iron flat

\$150

39

ALLYSON SWANEY
OCEAN WAVES



HANDWOVEN HANDSPUN HANGING JEWELRY HOLDER
MIXED YARNS & MATERIALS BIRCH BRANCH HANGER
WEFT HANDSPUN FROM HAND-DYED WOOL ROVING

31.5 X 26" INCLUD EARRINGS
\$ 100

40
ALLYSON SWANEY
CANCER JOURNEY



MY BROKEN ROAD WILL TOMORROW EVER COME? SET FIRE TO MY TEARS
3 PIECE HANDWOVEN HAND CONSTRUCTED WALL HANGINGS
MIXED FIBERS 37" X 12" / 35" X 12" / 33.5" X 12" INCLUDES HANGERS
\$350

41

**JOAN M. KARP
SEA AND EARTH**

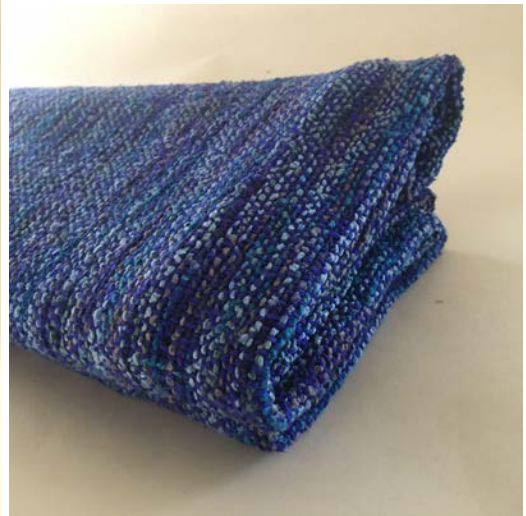


**HANDWOVEN SAORI INSPIRED WALL HANGING
HEMP YARN, miscellaneous YARNS & RIBBONS, DRIFTWOOD 19" X
45"
\$190**

42

DEBBIE THOMPSON

OCEAN BLUES BLANKET CURL UP & HEAR THE OCEAN!!



HANDWOVEN RAW SILK NOIL BLANKET

60" X 72"

HANDWASH Lay flat to Dry or Dry Clean

\$200

43

RICHENA CURPHEY

BABY HUMPBACK WHALE



HANDSPUN AMIGURMI SHEEPSWOOL (blue) &

NATURAL LLAMA from artist's Llamas 14"x5"x5"

Polyfil stuffing \$120

44

**ALLYSON SWANEY
SPRINGTIME SOFTNESS**



HANDWOVEN ALPACA RUG

SURI ALPACA RUG YARN with COTTON CORE COTTON WARP

**Approx 24" x 36" Alpaca yarn from Alpaca Farm in Oregon
\$ 90**

45

KATHERINE SKY TUCKER

NAVAJO CHURRO wool PILLOWS



**HANDWOVEN PILLOWS IN PLAIN & TWILL WEAVES
NATURAL GREY, WHITE, Onion Skin Dyed HANDSPUN
YARNS from Weaver's Sheep Raised in Acton, Calif.**

Wool Warp 5 EPI

20" X 20"

\$500 EACH

46
KATHERINE SKY TUCKER
NAVAJO CHURRO WOOL RUG

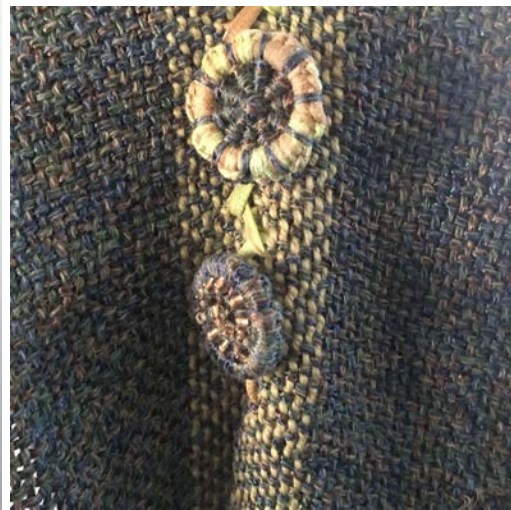


HANDSPUN, HANDWOVEN Sepi, Mixed twill weave
Natural grey & white Natural dye: Madder red
24" x 44
\$700

47

JUDY HERSH

SPANISH LACE BORDER HANDWOVEN SHRUG



RAYON & COTTON YARNS Width 24" Length 19"

Handmade Dorset Buttons, Twisted Fringe,

Herringbone Embroidery Stitch,

Plain Weave with Spanish lace Border

\$250

48

**DEBBIE THOMPSON
BERRY BOLERO**



HANDWOVEN SILK NOIL- size MEDIUM
Colors reminiscent of A bowl of BERRIES
pure raw silk noil, handwoven and sewn.
Handwash, lay flat to dry or Dry Clean
\$160

49

CINDY HAHN

COLOR TRANSITION



HANDWOVEN WOOL RUG or TABLE RUNNER

WEFT FACED WEAVE 100% WOOL WEFT & LINEN WARP

19.75" X 49" with FRINGE Warp sett 6 epi

\$220

50

BARBARA BISSETT

DESERT SANDSTONE



SAORI INSPIRED HANDWOVEN VEST

PLAIN WEAVE with CLASP WEFT & INLAY WEAVING

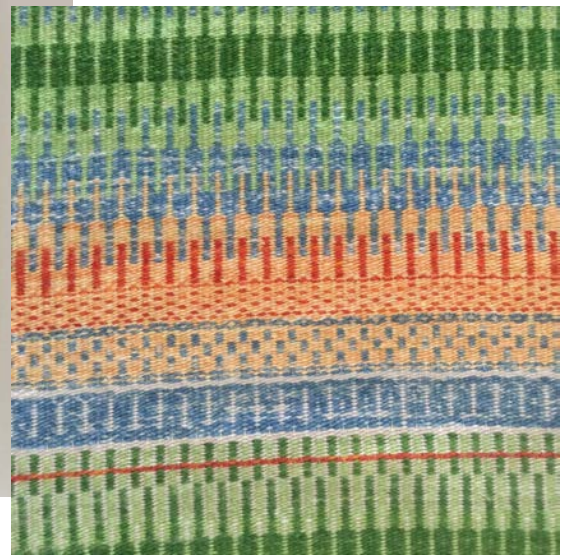
SILK, RAYON, COTTON, NYLON, & WOOL 10 epi sz S/M

34' X 40" Hand wash Cool mild soap; roll in towel; lay flat to dry

\$225

51

MELISSA HANSEN
RAINBOW DREAM



HANDWOVEN RUG- Scandinavian KROKBAGD-3 SHAFT Technique
HANDDYED CHURRO WOOL YARN from Navajo Nation
21" x 30" WOOL WARP
\$300

52
DEBBIE THOMPSON
CHERRY BLOSSOM KIMONO



RAW SILK NOIL / RAYON TRIM size Medium
HANDWOVEN HANDSEWN-beautifully finished
Handwash, lay flat to dry or Dry Clean
\$220

53

**PAT SULLIVAN
ALL COLORS**



HANDWOVEN COLOR GAMP SHAWL

TWILL THREADING-HARRISVILLE WOOL

15" X 54"

\$100

54

JUDY HERSH

PURSE with KUMIHIMO strap



NOVELTY YARN, Rattail cord, fabric, Vintage Button

9"X 9" Strap 9" Inspired by yarn used as Weft.

Handwoven on 10" Rigid Heddle Loom 7.5 dpi/8 ppi

Warp: rayon/nylon Weft: acrylic, nylon & metallic

\$120

55 MARYANN ECKHOUT HARVEST LIGHTS



HANDWOVEN SCARF 8" X 72" 10 epi

COTTON & RAYON/NYLON YARNS BEADED FRINGE

HANDWASH COOL WATER, ROLL IN TOWEL, LAY FLAT TO AIR DRY

\$75

56

CINDY HAHN

RUST BAG



HANDWOVEN TAPESTRY BAG

WOOL, COTTON, MOHAIR, RAYON

6" X 6" LINED MAGNETIC CLOSURE

\$80

57

**CINDY HAHN
BLACK CLUTCH**



**HANDWOVEN WEFT-FACE TAPESTRY BAG
WOOL, COTTON, MOHAIR, RAYON
4.5" X 7" LINED FOLDOVER SNAP CLOSURE
\$80**

58
BARBARA BISSETT
WIND, EARTH, FIRE



PLAIN WEAVE & CLASP WEFT HANDWOVEN SCARF
RAYON & COTTON 10 epi 6" x 65" w/o Fringe
Hand wash Cool mild soap; roll in towel: lay flat to dry
\$75

59
NANCY WAGENBACH
AUTUMN TWEED 2022



HANDSPUN & HANDKNIT SCARF 6" X 62"
100% SILK FINGERING WEIGHT HANDSPUN YARNS
HANDWASH GENTLY COOL WATER, ROLL IN TOWEL, LAY FLAT TO AIR DRY
\$175

60
BARBARA BISSETT
NIGHT LIFE



HANDWOVEN CROSSBODY PURSE

RAYON & NYLON YARNS 7" X 7"

10epi BALANCED PLAIN WEAVE

Hand wash Cool mild soap; roll in towel: lay flat to dry

\$90

61
BARBARA BISSETT
PEACEFUL PATTERN



FIBONACCI SEQUENCE SCARF

RAYON & LINEN 8 epi 9" X 80"

BALANCED PLAIN WEAVE - RANDOM FIBONACCI PATTERN

Hand wash Cool mild soap; roll in towel: lay flat to dry

\$150

62

BARBARA BISSETT

PIZZAZZ



SAORI INSPIRED HANDWOVEN SHRUG

PLAIN WEAVE, MULTIPLE DENTS & EPIS

RAYON, WOOL, NYLON & COTTON 18" X 33"

Hand wash Cool mild soap; roll in towel; lay flat to dry

\$200

63

**KAREN WASHBURN
CORNISH FAIRINGS**



**HANDWOVEN, HANDMADE CROSSBODY PURSE
FRONT zippered POCKET & zippered CLOSURE
COTTON WARP, hand-dyedCOTTON WEFT, COTTON FABRIC, VINYL EXTERIOR
12 epi 8" x 10" DO NOT WASH
\$125**

64
NONA HUMMEL
THE SHEEP SHAWL 2022



HANDSPUN -Fingering Weight 28wpi
HANDKNIT- Lace Pattern Design by Evelyn Clark
Merino 70% / Silk 30
HANDWASH-LAY FLAT TO DRY- BLOCK TO SHAPE
\$600

65

BARBARA BISSETT
SUNNY DAY



SAORI INSPIRED HANDWOVEN VEST
PLAIN WEAVE, CLASP WEFT & INLAY
RAYON,LINEN & COTTON 10 WPI/ WPI SZ Small/Med
Hand wash Cool mild soap; roll in towel: lay flat to dry
\$185

66

CAROL JORDAN

PETITE SCARF with 'FUR' ENDS



HANDWOVEN PETITE NECK WARMER

STRIPED in BLACK & GRAY

SOFT MIXED FIBERS & PLUSH 'FUR' ENDS

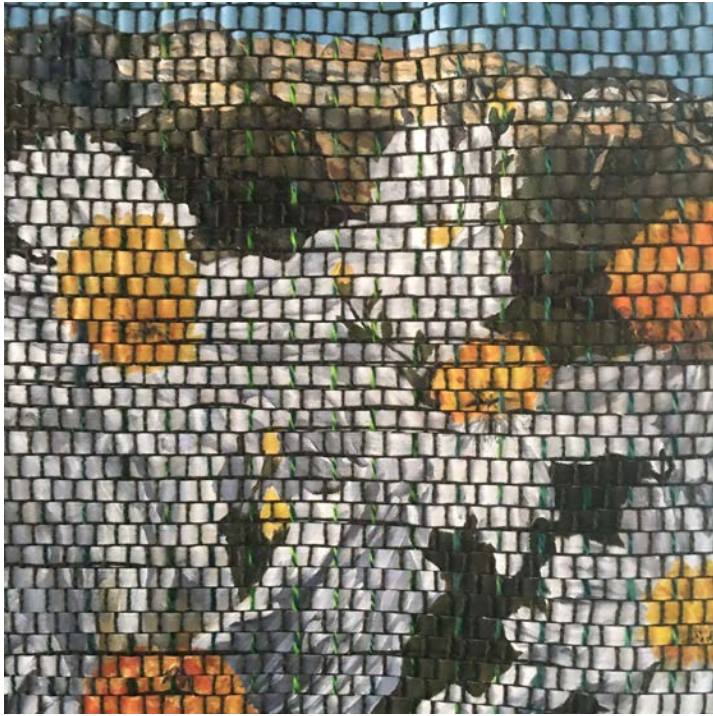
6.5" X 50"

\$50

67

ELIZABETH SOUZA

UPPER OJAI in ANALOG PIXELS



INSPIRED BY Upper Ojai Landscape & Beatrice Wood

weft: OIL ON CANVAS & WOOL YARNS

warp: HANDSPUN & COMMERCIAL WOOL YARNS 4epi

25.5 in X 24 in

\$1200

68

TERESA CAMARILLO

HYACINTHS TO FEED YOUR SOUL



ORIGINAL DESIGN HANDWOVEN FOUR COLOR PASTEL SCARF

60% WOOL/ 40% FINE COTTON 2 X 2 LENO LACE WEAVE

7" X 54" 8EPI BEADED FRINGE

\$85

69

SHEEP to SHAWL HANDSPINNERS

2019 VENTURA CO FAIR PILLOW



HANDMADE with FABRIC HANDSPUN, HANDWOVEN
at SHEEP TO SHAWL EVENT 2019 VENTURA COUNTY FAIR
SHEEPSWOOL, ALPACA & MOHAIR , fabric, pillow form, beads
PLAIN WEAVE warp & weft 8 epi 16" X 16"
\$ 100

70

TERESA CAMARILLO NATURAL LOCKS HANDWOVEN THROW PILLOWS



HANDMADE PILLOWS-WOVEN HANDSPUN & BLACK WOOL Twisted Fringe
NATURAL DARK GREY COTSWOLD ART YARN OF LOCKS & CURLS
15" X 15" FLAX FABRIC BACKING
\$100 /set of TWO

71

NORMA AMES

SEAMIST SHAWL



HANDWOVEN TRIANGLE SHAWL

WOVEN ON TRIANGLE LOOM

MOHAIR 66" X 31" Handwash -lay flat to dry

\$100

72

**ALLYSON SWANEY
SLEEPYTIME HUCK**



BABY BLANKET- Handwoven in Huck pattern
100% COTTON 34" X 28"
MACHINE WASH & DRY

73

**ALLYSON SWANEY
PLAYTIME HUCK**



**BABY BLANKET- Handwoven in Huck pattern
100% COTTON 34" X 31"
MACHINE WASH & DRY**

74

CINDY HAHN

APRICOT SHAWL



HANDWOVEN SHAWL-Soft and long,

Mohair, Wool, Rayon, Silk 18" X 96"

\$130

75

**CINDY HAHN
BLUE SHAWL**



**HANDWOVEN SHAWL-Soft and long,
Mohair, Wool, Rayon, Silk 18" X 96"
\$130**
